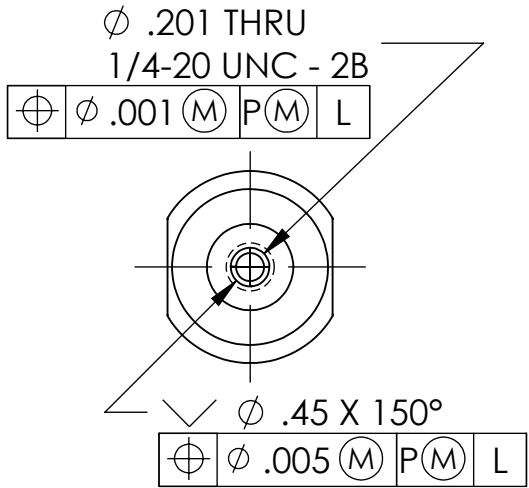
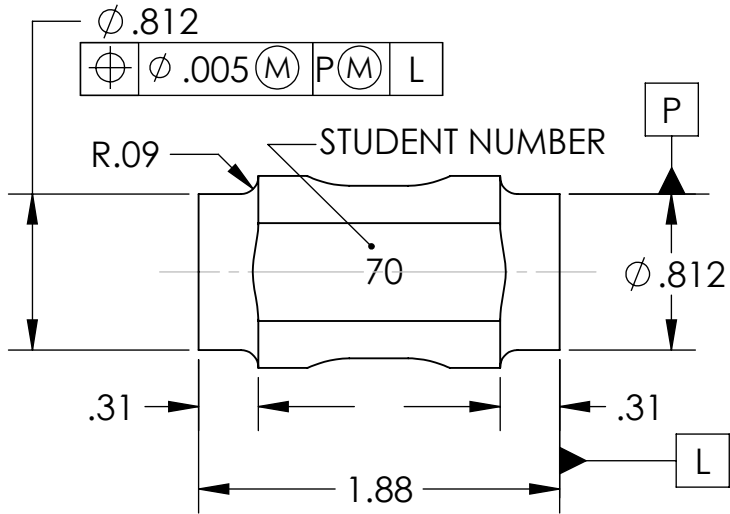
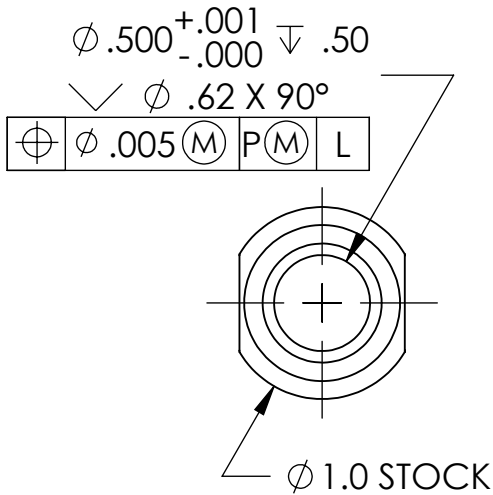
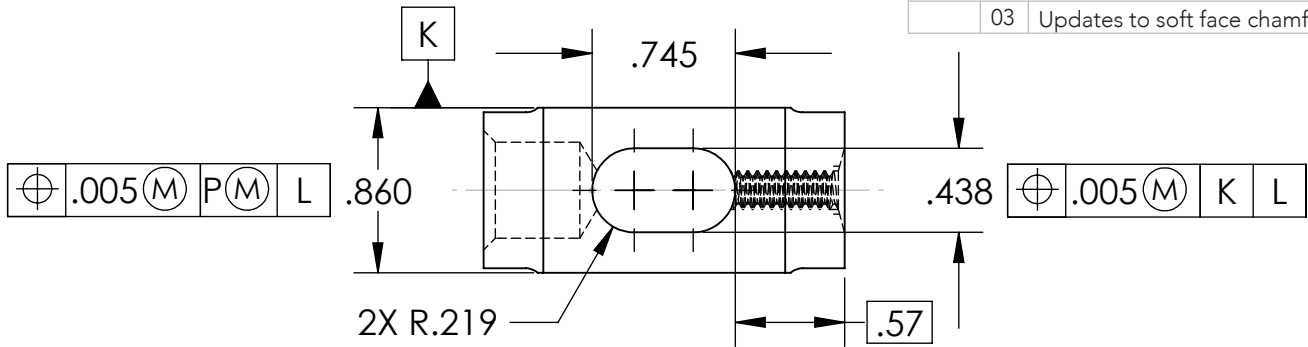


REVISIONS				
ZONE	REV.	DESCRIPTION	DATE	APPROVED
	01	General update to start revision process	08/26/14	PS
	02	Updates to soft face csink and gen rev.	03/04/22	HS
	03	Updates to soft face chamfer dimension	03/22/24	GZ



**PROPRIETARY AND CONFIDENTIAL**  
 THE INFORMATION CONTAINED IN THIS  
 DRAWING IS THE SOLE PROPERTY OF  
 HARVEY MUDD COLLEGE. ANY  
 REPRODUCTION IN PART OR AS A WHOLE  
 WITHOUT THE WRITTEN PERMISSION OF  
 HARVEY MUDD COLLEGE IS  
 PROHIBITED.

		UNLESS OTHERWISE SPECIFIED:		NAME	DATE
		DIMENSIONS ARE IN INCHES		DRAWN	RES
		TOLERANCES:		CHECKED	9/12/03
		FRACTIONAL $\pm$		ENG APPR.	
		ANGULAR: MACH $\pm$ BEND $\pm$		MFG APPR.	
		TWO PLACE DECIMAL $\pm .03$		Q.A.	
		THREE PLACE DECIMAL $\pm .005$		COMMENTS:	
		INTERPRET GEOMETRIC TOLERANC- ING PER: ASME Y14.5M 1994			
		MATERIAL			
		AISI 1015			
		FINISH			
		AS MACHINED			
NEXT ASSY	USED ON				
APPLICATION		DO NOT SCALE DRAWING			

HARVEY MUDD COLLEGE

TITLE:

HEAD-HAMMER

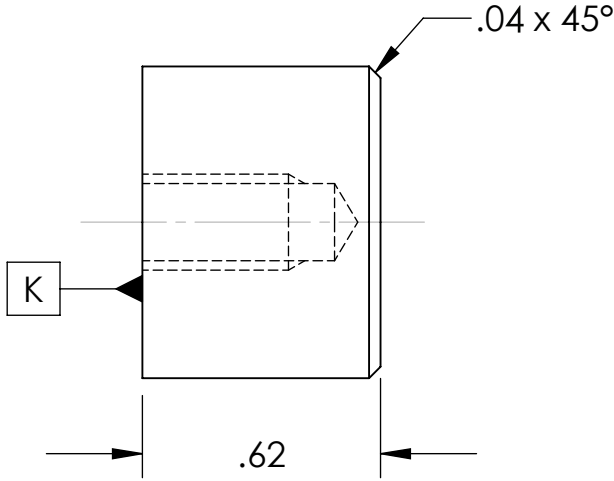
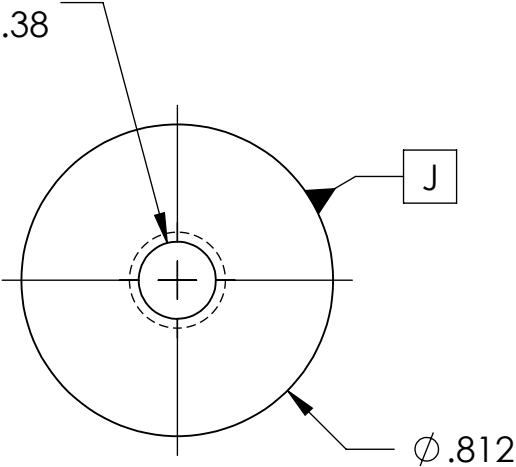
SIZE	DWG. NO.	REV
<b>A</b>	<b>Hammer</b>	<b>02</b>

SCALE: 1:1	WEIGHT:	SHEET 1 OF 5
------------	---------	--------------

		REVISIONS			
ZONE	REV.	DESCRIPTION	DATE	APPROVED	
	01	General update to start revision process	08/26/14	PS	
	02	Updates to soft face csink and gen rev.	03/04/22	HS	
	03	Updates to soft face chamfer dimension	03/22/24	GZ	

Ø .201 ∓ .50  
1/4-20 UNC - 2B ∓ .38

	Ø .003	J	K
--	--------	---	---

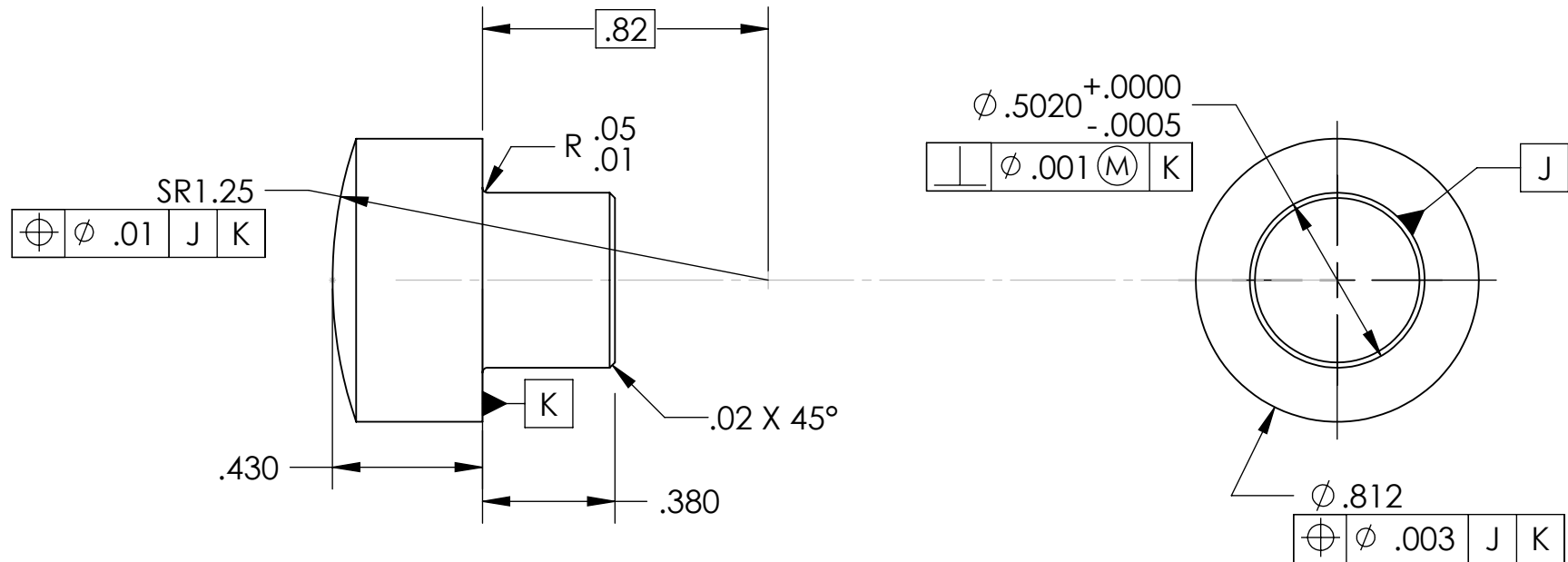


**PROPRIETARY AND CONFIDENTIAL**  
THE INFORMATION CONTAINED IN THIS  
DRAWING IS THE SOLE PROPERTY OF  
HARVEY MUDD COLLEGE. ANY  
REPRODUCTION IN PART OR AS A WHOLE  
WITHOUT THE WRITTEN PERMISSION OF  
HARVEY MUDD COLLEGE IS  
PROHIBITED.

		UNLESS OTHERWISE SPECIFIED:		NAME	DATE
		DIMENSIONS ARE IN INCHES TOLERANCES: FRACTIONAL ± ANGULAR: MACH ±    BEND ± TWO PLACE DECIMAL    ±.03 THREE PLACE DECIMAL    ±.003	DRAWN	RES	9/12/03
			CHECKED		
			ENG APPR.		
			MFG APPR.		
		INTERPRET GEOMETRIC TOLERANC- ING PER:    ASME Y14.5M 1994	Q.A.		
		MATERIAL NYLON	COMMENTS:  3/22/24 Softface updates not reflected in sldprt or slddrw file		
NEXT ASSY	USED ON	FINISH AS MACHINED			
APPLICATION		DO NOT SCALE DRAWING			

HARVEY MUDD COLLEGE		
TITLE:		
SOFTFACE - HAMMER		
SIZE <b>A</b>	DWG. NO. <b>Hammer</b>	REV <b>02</b>
SCALE: 2:1	WEIGHT:	SHEET 2 OF 5

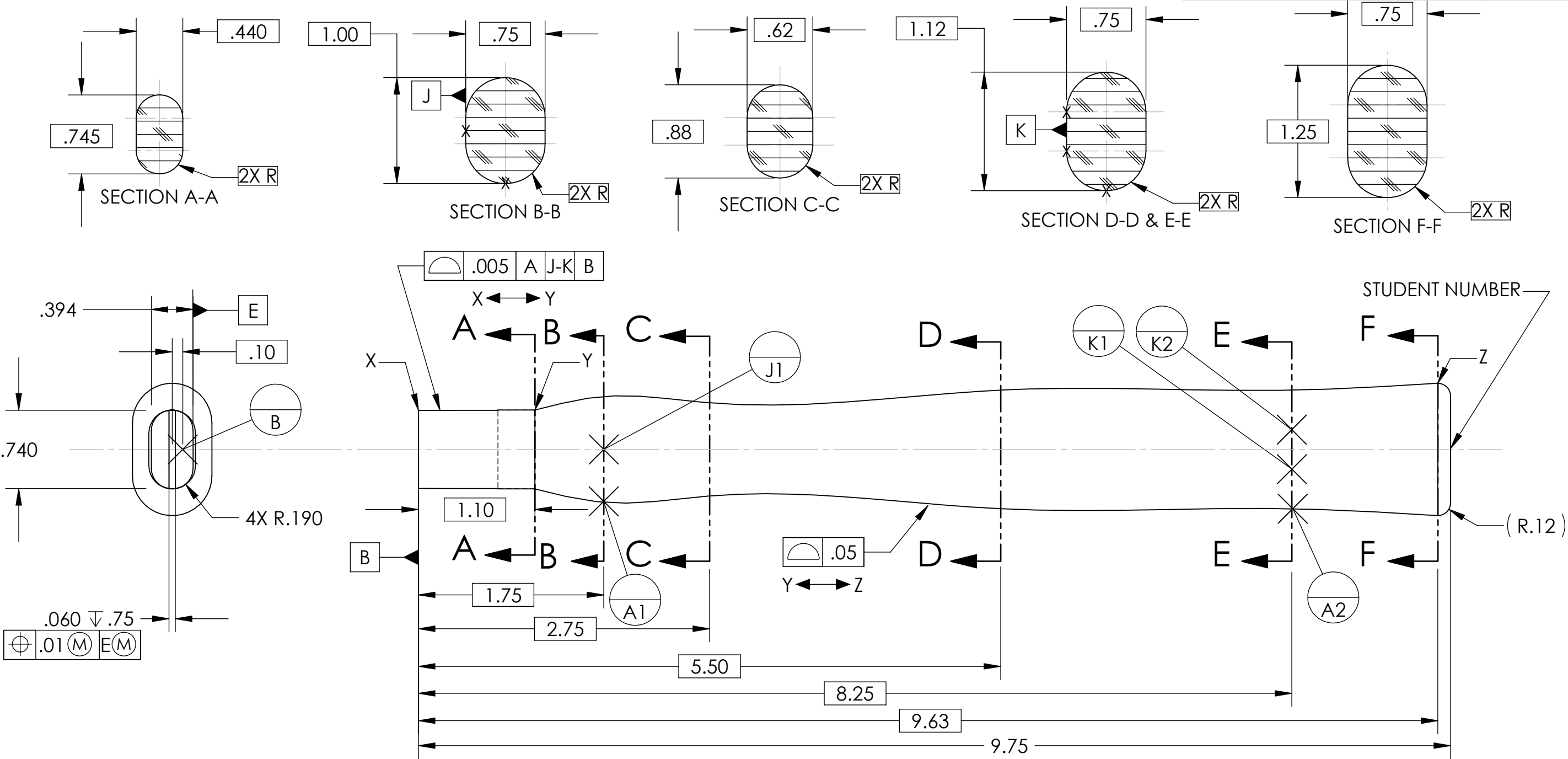
		REVISIONS		
ZONE	REV.	DESCRIPTION	DATE	APPROVED
	01	General update to start revision process	08/26/14	PS
	02	Updates to soft face csink and gen rev.	03/04/22	HS
	03	Updates to soft face chamfer dimension	03/22/24	GZ



NOTE: HEAT TREATMENT TO RC 43-48

<div>PROPRIETARY AND CONFIDENTIAL</div> <div>THE INFORMATION CONTAINED IN THIS DRAWING IS THE SOLE PROPERTY OF HARVEY MUDD COLLEGE. ANY REPRODUCTION IN PART OR AS A WHOLE WITHOUT THE WRITTEN PERMISSION OF HARVEY MUDD COLLEGE IS PROHIBITED.</div>			UNLESS OTHERWISE SPECIFIED:		NAME	DATE	HARVEY MUDD COLLEGE		
			DIMENSIONS ARE IN INCHES TOLERANCES: FRACTIONAL ± ANGULAR: MACH ±    BEND ± TWO PLACE DECIMAL    ±.03 THREE PLACE DECIMAL    ±.003	DRAWN	RES	9/12/03	TITLE:  HARDFACE - HAMMER		
				CHECKED					
				ENG APPR.					
				MFG APPR.					
			INTERPRET GEOMETRIC TOLERANC- ING PER:    ASME Y14.5M 1994	Q.A.			SIZE    DWG. NO.    REV <div>A    Hammer    02</div> <div>SCALE: 2:1    WEIGHT:    SHEET 3 OF 5</div>		
			MATERIAL AISI 4340	COMMENTS:					
	NEXT ASSY	USED ON	FINISH POLISH						
APPLICATION		DO NOT SCALE DRAWING							

		REVISIONS			
ZONE	REV.	DESCRIPTION	DATE	APPROVED	
	01	General update to start revision process	08/26/14	PS	
	02	Updates to soft face csink and gen rev.	03/04/22	HS	
	03	Updates to soft face chamfer dimension	03/22/24	GZ	

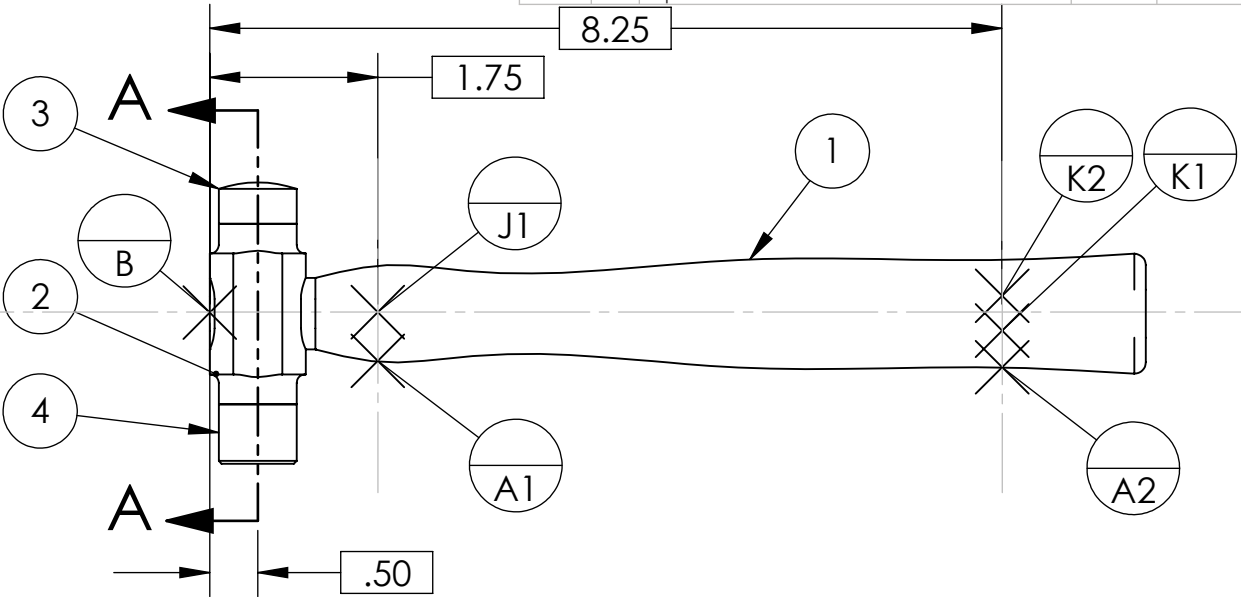
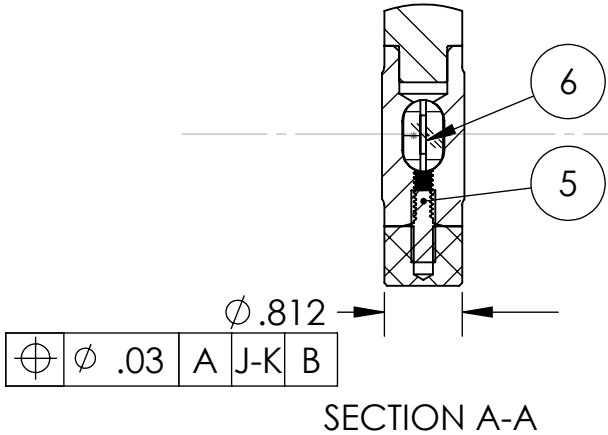


**PROPRIETARY AND CONFIDENTIAL**  
THE INFORMATION CONTAINED IN THIS DRAWING IS THE SOLE PROPERTY OF <INSERT COMPANY NAME HERE>. ANY REPRODUCTION IN PART OR AS A WHOLE WITHOUT THE WRITTEN PERMISSION OF <INSERT COMPANY NAME HERE> IS PROHIBITED.

		UNLESS OTHERWISE SPECIFIED:  DIMENSIONS ARE IN INCHES TOLERANCES: FRACTIONAL ± ANGULAR: MACH ±    BEND ± TWO PLACE DECIMAL    ±.05 THREE PLACE DECIMAL    ±.005  INTERPRET GEOMETRIC TOLERANCING PER: MATERIAL 1 BY 1.5 CLEAR OAK FINISH SANDED 180 GRIT		NAME	DATE	HARVEY MUDD COLLEGE		
			DRAWN	RES	9/12/03	TITLE:		
			CHECKED			HANDLE - HAMMER		
			ENG APPR.			SIZE   DWG. NO.    REV		
			MFG APPR.			B    Hammer		
			Q.A.			SCALE: 1:1   WEIGHT:    SHEET 4 OF 5		
			COMMENTS:					
NEXT ASSY	USED ON	APPLICATION			DO NOT SCALE DRAWING			

ZONE	REV.	REVISIONS	DATE	APPROVED
		DESCRIPTION		
	01	General update to start revision process	08/26/14	PS
	02	Updates to soft face csink and gen rev.	03/04/22	HS
	03	Updates to soft face chamfer dimension	03/22/24	GZ

NOTE:  
ITEMS 1, 2, & 6  
MUST BE FLUSH



ITEM NO.	QTY.	PART NO.	MATERIAL	DESCRIPTION
1	1	HammerHandle	1 BY 1.5 CLEAR OAK	HANDLE - HAMMER
2	1	HammerHead	AISI 1015	HEAD-HAMMER
3	1	HardFace	AISI 4340	HARDFACE - HAMMER
4	1	SoftFace	NYLON	SOFTFACE - HAMMER
5	1	SetScrew	AISI 1015	$\phi$ .250-20 X .75 SET SCREW
6	1	GradyWedge	RED DEVIL #4	GRADY WEDGE

**PROPRIETARY AND CONFIDENTIAL**  
THE INFORMATION CONTAINED IN THIS DRAWING IS THE SOLE PROPERTY OF HARVEY MUDD COLLEGE. ANY REPRODUCTION IN PART OR AS A WHOLE WITHOUT THE WRITTEN PERMISSION OF HARVEY MUDD COLLEGE IS PROHIBITED.

		UNLESS OTHERWISE SPECIFIED:		NAME	DATE
		DIMENSIONS ARE IN INCHES	DRAWN	RES	9/12/03
		TOLERANCES:	CHECKED		
		FRACTIONAL $\pm$	ENG APPR.		
		ANGULAR: MACH $\pm$ BEND $\pm$	MFG APPR.		
		TWO PLACE DECIMAL $\pm$	Q.A.		
		THREE PLACE DECIMAL $\pm$	COMMENTS:		
		INTERPRET GEOMETRIC TOLERANCING PER: ASME Y14.5 1994			
		MATERIAL			
		FINISH			
NEXT ASSY	USED ON				
APPLICATION		DO NOT SCALE DRAWING			

HARVEY MUDD COLLEGE		
TITLE:		
ASSEMBLY		
SIZE	DWG. NO.	REV
<b>A</b>	<b>Hammer</b>	<b>02</b>
SCALE: 1:2	WEIGHT:	SHEET 5 OF 5